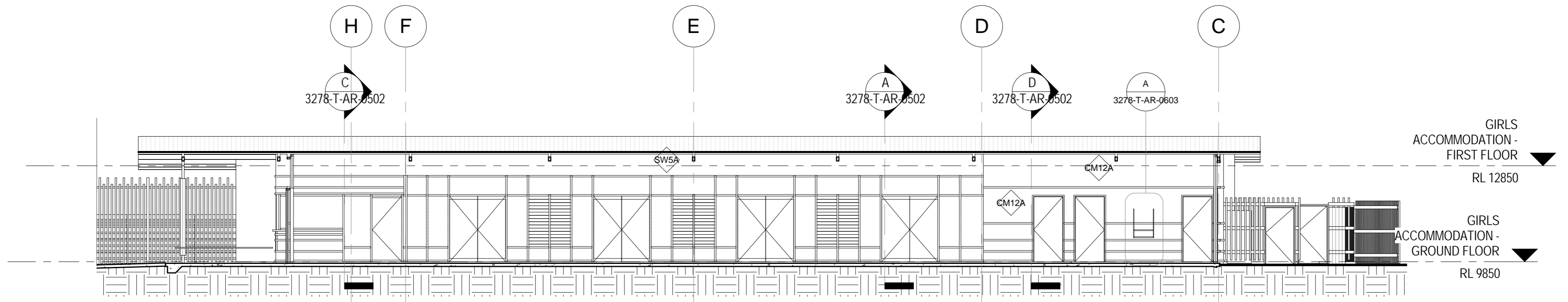
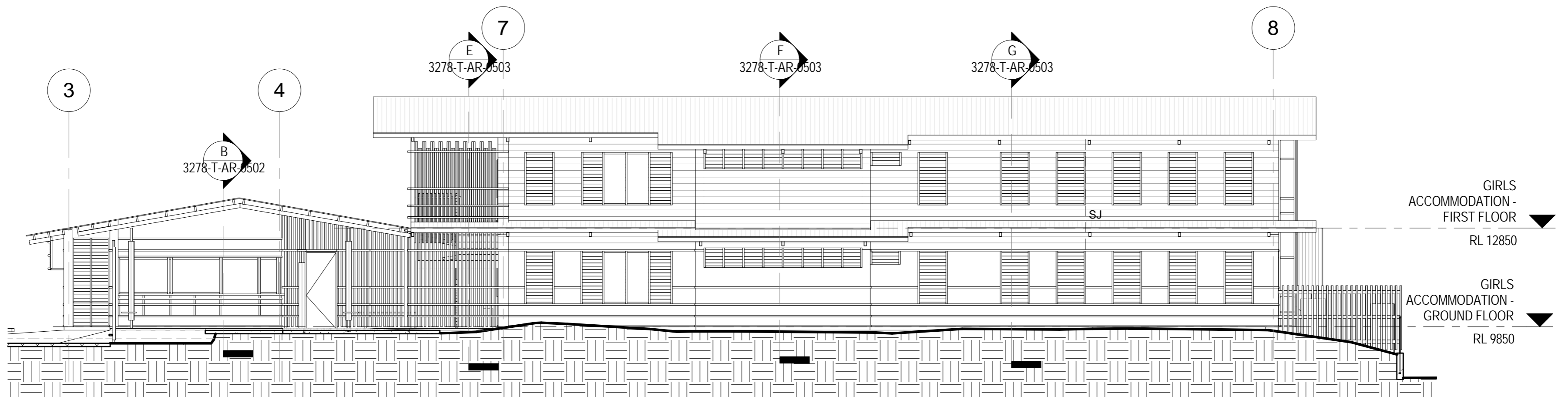


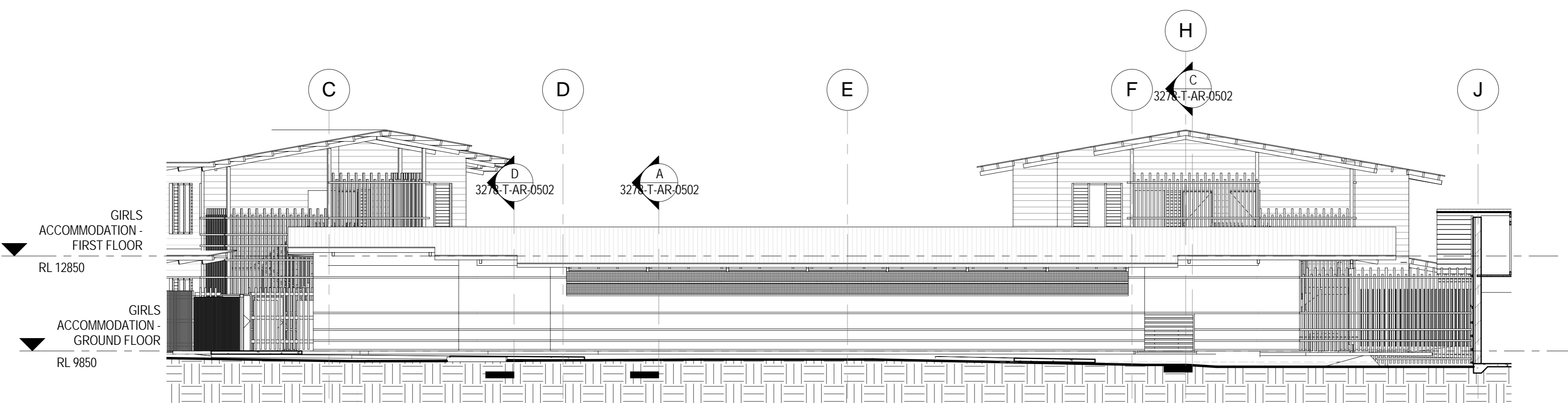
1 GIRLS ACCOMMODATION - COMMON ROOM NORTH ELEVATION
 3278-T-AR-0906 1:100 BOYS ACCOMMODATION - COMMON ROOM SOUTH ELEVATION (MIRROR IMAGE)



2 GIRLS ACCOMMODATION - COMMON ROOM EAST ELEVATION
 3278-T-AR-0904 1:100 BOYS ACCOMMODATION - COMMON ROOM EAST ELEVATION (MIRROR IMAGE)



3 GIRLS ACCOMMODATION - COMMON ROOM & JUNIOR GIRLS SOUTH ELEVATION
 1:100 BOYS ACCOMMODATION - COMMON ROOM & JUNIOR BOYS NORTH ELEVATION (MIRROR IMAGE)



4 GIRLS ACCOMMODATION - COMMON ROOM WEST ELEVATION
 1:100 BOYS ACCOMMODATION - COMMON ROOM WEST ELEVATION (MIRROR IMAGE)

SJ STEEL SHEET JOIN
 REFER DETAIL 6 ON DWG 0605
 REFER SPEC

SETOUT OF HORIZONTAL FC WALL TRIM
 TO BE PROVIDED AT CONSTRUCTION

TENDER ISSUE - NOT FOR CONSTRUCTION

10 10 20 50 100 200 500

FISHER BUTTROSE ARCHITECTS PTY LTD
 ABN 078 745 856
 P 07 4031 1707 F 07 4041 5881
 LEVEL 1, 116 GRAFTON STREET
 4807 PO BOX 5107
 CAIRNS QUEENSLAND AUSTRALIA
 www.fisherbttrosc.com.au

AMENDMENTS

ISSUE	DATE	DESCRIPTION	INT
1	16-02-2011	TENDER ISSUE	BK

**fisher
 architects
 buttrose**

WESTERN CAPE
 RESIDENTIAL CAMPUS
 TAMARIND ROAD, WEIPA
 INDIGENOUS LAND CORPORATION

GIRLS ACCOMMODATION
 - ELEVATIONS

SCALE AT A1 1:100

APPROVED MB DRAWN BK PROJECT No. 1008

DRAWING No. 3278-T-AR-0401 ISSUE 1

16/02/2011 12:28:19 PM