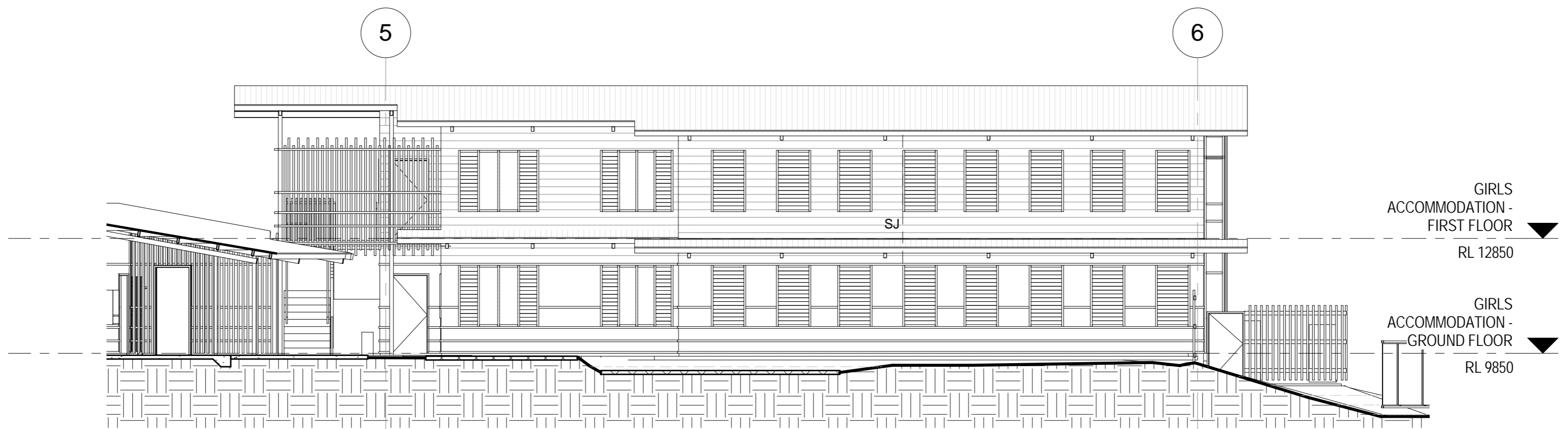


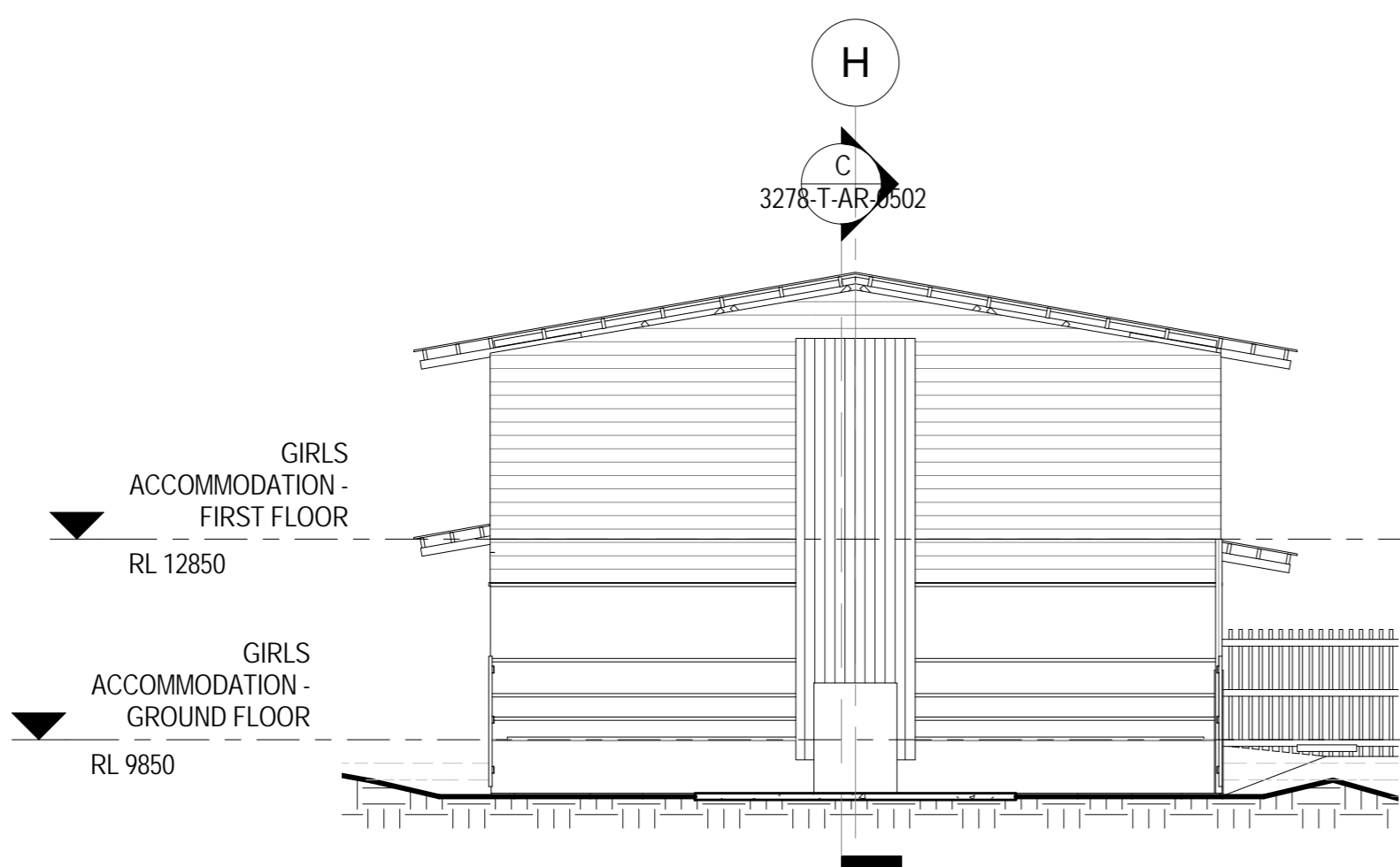
1 GIRLS ACCOMMODATION - JUNIOR GIRLS NORTH ELEVATION
1 : 100 BOYS ACCOMMODATION - JUNIOR BOYS SOUTH ELEVATION (MIRROR IMAGE)



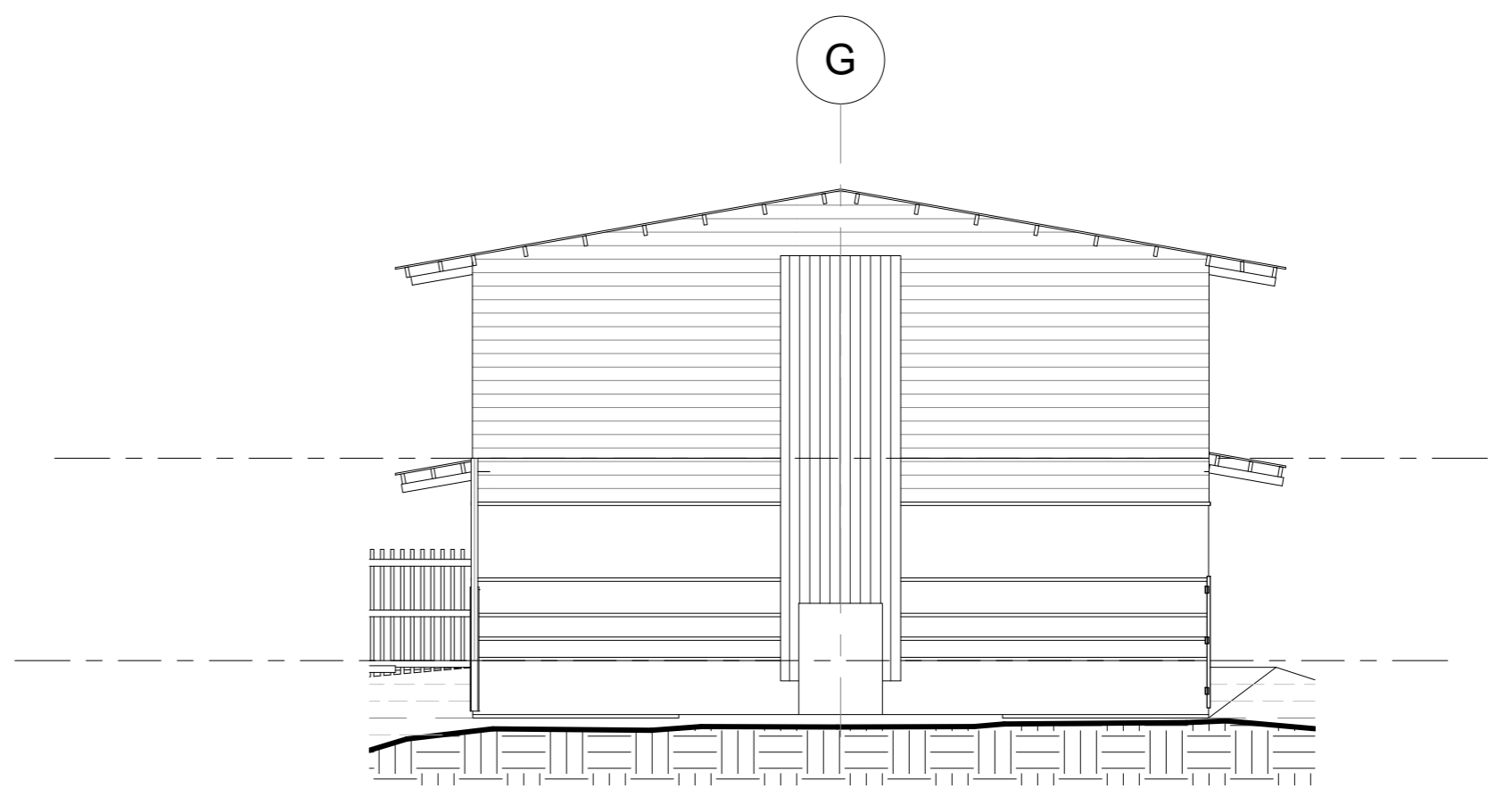
2 GIRLS ACCOMMODATION - SENIOR GIRLS NORTH ELEVATION
3278-T-AR-0906 1 : 100 BOYS ACCOMMODATION - SENIOR BOYS SOUTH ELEVATION (MIRROR IMAGE)



3 GIRLS ACCOMMODATION - SENIOR GIRLS SOUTH ELEVATION
3278-T-AR-0906 1 : 100 BOYS ACCOMMODATION - SENIOR BOYS NORTH ELEVATION (MIRROR IMAGE)



4 GIRLS ACCOMMODATION - JUNIOR GIRLS EAST ELEVATION
1 : 100 BOYS ACCOMMODATION - JUNIOR BOYS EAST ELEVATION (MIRROR IMAGE)



5 GIRLS ACCOMMODATION - SENIOR GIRLS EAST ELEVATION
1 : 100 BOYS ACCOMMODATION - SENIOR BOYS EAST ELEVATION (MIRROR IMAGE)

SJ STEEL SHEET JOIN
REFER DETAIL 6 ON DWG 0605
REFER SPEC

SETOUT OF HORIZONTAL FC WALL TRIM
TO BE PROVIDED AT CONSTRUCTION

TENDER ISSUE - NOT FOR CONSTRUCTION

0 10 20 50 100 200 500

FISHER BUTTROSE ARCHITECTS PTY LTD
ABN 078 745 856
P 07 4031 1707 F 07 4041 5881
LEVEL 1, 115 GRAFTON STREET
4807 PO BOX 5107
CAIRNS QUEENSLAND AUSTRALIA
www.fisherbttrose.com.au

AMENDMENTS

ISSUE	DATE	DESCRIPTION	INT
1	16-02-2011	TENDER ISSUE	BK

**fisher
architects
buttrose**

WESTERN CAPE
RESIDENTIAL CAMPUS
TAMARIND ROAD, WEIPA
INDIGENOUS LAND CORPORATION

GIRLS ACCOMMODATION
- ELEVATIONS

SCALE AT A1 1 : 100

APPROVED MB DRAWN BK PROJECT No. 1008

DRAWING No. 3278-T-AR-0402 ISSUE 1

16/02/2011 12:28:32 PM