

SP 1 - PROTOTYPE 30.09.11

SP 2 - AS NOTED 12.12.11

SP 3 - AS NOTED 26.03/12

SP 4 - KIOSK

DEMONSTRATE
31.05.11

REFER CIVIL DRAWINGS
ALL OPENING, GRAPES TO
AMBULANCE, MAINTENANCE
& TUSH AROUND BAYS
REFER ARCH SPEC

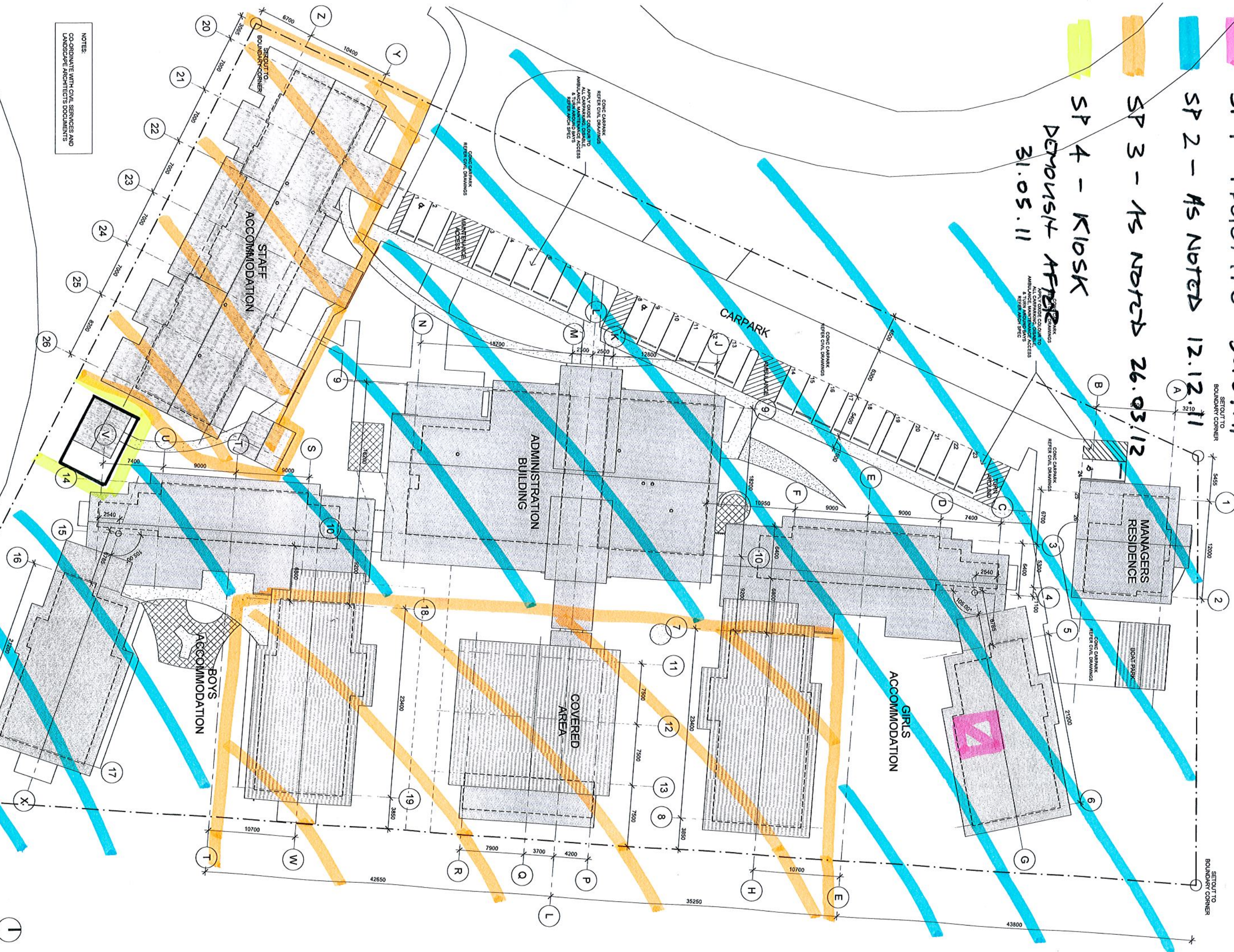
REFER CIVIL DRAWINGS
ALL OPENING, GRAPES TO
AMBULANCE, MAINTENANCE
& TUSH AROUND BAYS
REFER ARCH SPEC

REFER CIVIL DRAWINGS
ALL OPENING, GRAPES TO
AMBULANCE, MAINTENANCE
& TUSH AROUND BAYS
REFER ARCH SPEC

REFER CIVIL DRAWINGS
ALL OPENING, GRAPES TO
AMBULANCE, MAINTENANCE
& TUSH AROUND BAYS
REFER ARCH SPEC

REFER CIVIL DRAWINGS
ALL OPENING, GRAPES TO
AMBULANCE, MAINTENANCE
& TUSH AROUND BAYS
REFER ARCH SPEC

REFER CIVIL DRAWINGS
ALL OPENING, GRAPES TO
AMBULANCE, MAINTENANCE
& TUSH AROUND BAYS
REFER ARCH SPEC



NOTES:
COORDINATE WITH CIVIL SERVICES AND
LANDSCAPE ARCHITECTS DOCUMENTS

PLANNING AND ARCHITECTS PTY LTD
ARCHITECTS
110/112 ST JOHN STREET
MELBOURNE VIC 3000
TEL: 03 9412 1100
WWW.FISHERARCHITECTS.COM.AU

AMENDMENTS

| NO | DATE | ISSUE |
|----|------------|--------------|
| 1 | 16/02/2011 | TENDER ISSUE |
| 2 | | |
| 3 | | |
| 4 | | |
| 5 | | |
| 6 | | |
| 7 | | |
| 8 | | |
| 9 | | |
| 10 | | |
| 11 | | |
| 12 | | |
| 13 | | |
| 14 | | |
| 15 | | |
| 16 | | |
| 17 | | |
| 18 | | |
| 19 | | |
| 20 | | |
| 21 | | |
| 22 | | |
| 23 | | |
| 24 | | |
| 25 | | |
| 26 | | |

fisher architects
outrose

WESTERN CAPE
RESIDENTIAL CAMPUS
TAMARIND ROAD, WEIPA
INDIGENOUS LAND CORPORATION

GRID SETOUT
SCALE A3/A4 1 : 200

APPROVED DRAWN PROJECT No
MB BK 1008
DRAWING NO. 3278-T-AR-0102

ISSUE 1
16/02/2011 2:18:07 PM

TENDER ISSUE - NOT FOR CONSTRUCTION